

2864 Shaughnessy Drive

Wellington, FL 33414

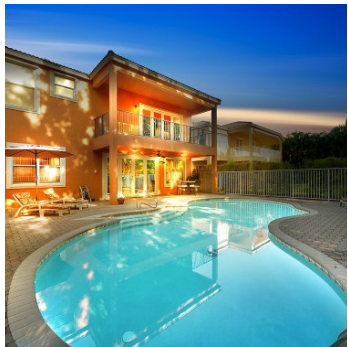
Priced at \$489,900



For Complete Info, Pictures & Directions:
Text "4817576" To 79564

5

BED



4

BATH

Priced at \$489,900

2864shaughnessydrive.ePropertySites.com

For more pictures instantly: Text "4817576" To 79564



4,136



Lot Size: 10,890 (0.25 acres) County: Palm Beach Community: Olympia Year built: 2005

MLS Nbr: RX-10378165 Property type: Single Family Home

Immaculate and Impeccably maintained Terrazza 5 in desirable Olympia! Move-in ready, model perfect home features 5 bedrooms plus sitting area(6th bedroom), 4 bathrooms and a two car garage boasting over 3300 living square feet. Enter through the glass double door front entryway with long views of the private lushly landscaped oasis! Bonus Private courtyard features 2 french door entries with access to your formal living and dining room. Lovely open kitchen concept with high ceilings and eat-in/snack bar overlooking the large family room. Plenty of granite kitchen counter space with brand new brushed stainless steel appliances, glass cooktop, and convection oven.

The broker, seller, builder, and/or developer does not guarantee the accuracy of information such as square footage, lot size, architectural images, or other information concerning the condition or features of subject property. Information is deemed reliable, but is not guaranteed. Information may have been obtained from public records and/or other sources.

Agent Information

Lender Information



Craig Fialkowski
3102176
Mobile 561-827-1790
Craig@CraigSellsPalmBeach.com
The Keyes Company



Suzanne Downs
Office 561-478-4780
kristen@palmbeachmortgagegroup.com
Palm Beach Mortgage Group, Inc

