



For Complete Info, Pictures & Directions:  
Text "1" To 79564

3  
BED



2  
BATH



Priced at \$4,500,000

249ruby.sallysample1.com

For more pictures instantly: Text "1" To 79564

3 2 2,500 2



Lot Size: 10,280 (0.24 acres) County: Los Angeles Year built: 1951 MLS Nbr: A4550990

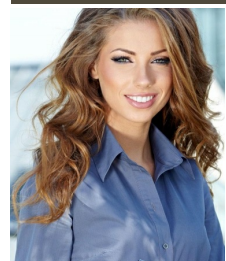
Property type: Single Family Home

This delightful home is sure to captivate you from the moment you walk in the door. Completely updated throughout with elegant, modern touches, original features have been retained to uphold the home's classic appeal.

Rich hardwoods gleam in every room, offset beautifully by the crisp white finish of the solid interior doors, new kitchen cabinets, and hand planed molding. Cozy up to the fire in the spacious, light-filled living room, or sneak away to the large main floor office for a peaceful retreat. The kitchen has been recently remodeled to feature stunning slab granite counters, professional-grade stainless appliances, and a

You can write your own disclaimer or use our default one like this: The broker, seller, builder, and/or developer does not guarantee the accuracy of information such as square footage, lot size, architectural images, or other information concerning the condition or features of subject property. Information is deemed reliable, but is not guaranteed.

## Agent Information



**Sally Agent**  
CA LIC #12345678  
Office 949.328.5050  
greg@agentmarketing.com  
**Sally Real Estate**